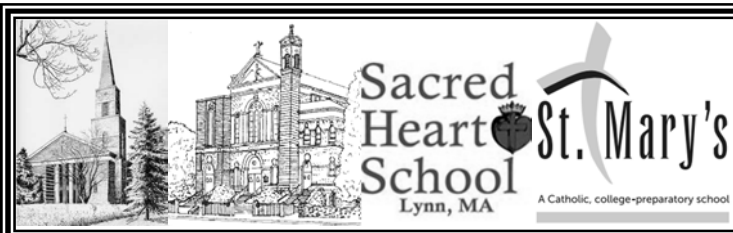


My Lord and my God!

*But these are written
that you may come to
believe that Jesus is
the Messiah, the Son
of God, and that through
this belief you may have
life in his name.*

John 20:31

*Jesus reveals
Himself to us
within
community*



Lynn Catholic Collaborative of Saint Mary & Sacred Heart

LYNN CATHOLIC COLLABORATIVE of SAINT MARY AND SACRED HEART OUR COLLABORATIVE IS SERVED BY:

Rev. Brian L. Flynn	Pastor
Rev. Tamiru Atraga	Parochial Vicar
Rev. Francis Cloherty	Sr. Priest in Residence
Rev. Philip Desrosiers	Weekend Assistant
Rev. Robert Labrie	Weekend Assistant
Rev. Mr. Timothy Dempsey	Deacon
Rev. Mr. Richard Field	Deacon
Rev. Mr. John Hardy	Deacon Emeritus
Rev. Mr. Anthony Cusack	Transitional Deacon
Mrs. Sharon Thurston	Director of Finance & Operations
Mr. Chris Carmody	Director of Ministries
Ms. Betty Lautner	Director of Music
Mrs. Fran Taylor	Pastoral Associate
Ms. Cory D'Arco	Children's Choir Director
Ms. Martine Francois	Faith Formation Assistant
Mrs. Donna Faieta	Administrative Assistant
Mrs. Joyce Martiniello	Collaborative Secretary

COLLABORATIVE OFFICE

8 South Common Street, Lynn MA 01902

Monday thru Friday 8:30am to 3:00pm

Sacred Heart - Thursday 9:00am to 12:00pm

Office 781-598-4907

781-593-8047

Fax 781-599-2088

St. Vincent de Paul Society (SH) 781-592-3015

St. Vincent de Paul Society (SM) 781-599-6705

Email: Admin@LynnCatholic.org

Collaborative Website: www.LynnCatholic.org

SACRED HEART SCHOOL

581 Boston Street, Lynn, MA 01905

781-592-7581

Pre-K to Grade 8

Websitewww.sacredheartschoollynn.org

PrincipalMrs. Joanne Eagan

ST. MARY'S HIGH SCHOOL, INC.

35 Tremont St., Lynn, MA 01902

781-595-7885

Grade 6 to 12

Websitewww.stmaryslynn.com

Head of SchoolGrace Cotter Regan

Assistant Head of SchoolDr. Mark DiFabio

The Sacrament of the Eucharist

Monday	8:15am Sacred Heart Church 12:05pm St. Mary's Chapel
Tuesday	8:15am Sacred Heart Church 12:05pm St. Mary's Chapel
Wednesday	7:00pm Sacred Heart Church
Thursday	12:05pm St. Mary's Chapel
Friday	8:15am Sacred Heart Church 12:05pm St. Mary's Chapel
Saturday	9:00am (Daily) St. Mary's Chapel 4:00pm St. Mary's Church 4:00pm Sacred Heart Church
Sunday	7:00am Sacred Heart Church 9:00am St. Mary's Church 10:00am Sacred Heart Church 11:30am St. Mary's Church 1:30pm (Haitian) St. Mary's Chapel 3:30pm (Congolese) St. Mary's Chapel 6:00pm St. Mary's Church

Holy Days & Holidays as Announced

The Sacrament of Reconciliation

Saturday at 3:00pm at St. Mary's
Saturday at 3:00pm at Sacred Heart
and by appointment

The Sacrament of Baptism

Baptisms are held the first and third Sunday of each month at 1:00pm. Please call the Collaborative Office for more information.

The Sacrament of Matrimony

Couples should contact the Collaborative Office at least six months prior to their wedding date.

The Sacrament of the Anointing of the Sick

Please speak to one of the priests after Mass or by appointment.



Easter Sunday Clergy Collection—Sacred Heart \$5,839 St. Mary's \$5,374
Sacred Heart Offertory \$2,480 St. Mary's Offertory \$1,265 Holy Thursday \$482 Good Friday \$1,213
There will be a second passing of the basket at St. Mary's for the Monthly Collection this week.

Thank you for your continued generosity and continued sacrifice!



Saturday, April 11

4:00pm SH Anna May & Joseph Nerich
 4:00pm SM Bernice & Anthony Ulbin

Sunday, April 12

7:00am SH Joseph & Mary Grace Milea
 9:00am SM Earl & Helen Allen
 10:00am SH Beverly Davie & Alice Ferrier
 11:30am SM Frank & Lillian Valeri
 6:00pm SM Lynn Catholic Collaborative

Monday, April 13

8:15am SH All Souls in Purgatory
 12:05pm SM Donna Doherty

Tuesday, April 14

8:15am SH Rev. William W. Campbell
 12:05pm SM Dorothy Gordinas

Wednesday, April 15

7:00pm SH Clara Finocchio

Thursday, April 16

12:05pm SM Rev. Louis D. Bourgeois

Friday, April 17

8:15am SH Lynn Catholic Collaborative
 12:05pm SM Special Intention

Saturday, April 18

4:00pm SH John J. Nerich, Jr.
 4:00pm SM Anneliese, Genevieve,
 James & John Flynn

Sunday, April 19

7:00am SH Carmen & Eileen Pappa
 9:00am SM Ellen Mahoney
 10:00am SH Mark W. Wright
 11:30am SM Raymond & Mark Sullivan
 6:00pm SM Lynn Catholic Collaborative

Sacred Heart Gather Page 972

****Please note on April 18 the 4:00pm Mass at Sacred Heart will be held in the Lower Church***

PARISH PASTORAL PLAN

After the efforts of our parish leadership, and including input from our parishioners, the Lynn Catholic Collaborative Pastoral Plan is ready for you to view on our parish website at www.LynnCatholic.com. For those of you without access to a computer, print copies are available at the Parish Office. A date will be announced soon to gather as a group and discuss the Pastoral Plan.



BREAD AND WINE MEMORIALS

The Bread and Wine at **Sacred Heart Church** this weekend were donated in **In Loving Memory of:**
LAWRENCE GOUBOUT
By his loving family

The Bread and Wine at **St. Mary's** for the month of **April** were donated in loving memory of:

RAYMOND KANE (Church) <i>By his loving wife & family</i>	FRANK & LILLIAN VALERI (Chapel) <i>Friends of St. Mary's Food Pantry</i>
---	---



Please pray for our deceased loved ones:
DOROTHY GORDINAS, MARY DUNN
ROBERT J. O'BRIEN, JR., DENNIS
DOUCETTE, PATRICIA NAUGLE &
DARRELL J. O'CONNOR

Pray for the sick especially Rev. Gregory Mecurio, Marguerite LeBlanc, Fara Jasmin, Lisa Slaney, David Harris, James & Ruth Milton, Vivian Clark, Micah Biello, Ralph Memmollo, Dorothy Griffin, Theresa Fee, Roger Lemure and Christopher Lemure. Pray also for those who grieve the loss of loved ones, for those who seek shelter, employment and the basic necessities of life, and for peace and justice in the world.



A donation in the St. Vincent de Paul baskets/boxes at the doors of the Churches is a nice way of remembering our needy. Thank you for helping us help others.

COLLABORATIVE WEEKLY RECURRING EVENTS

MON	5:15pm SM Medjugorje Group—Chapel
	7:00pm SM AA Meeting—Conference Room One
	7:00pm SM Haitian Charismatic Prayer - Chapel
TUE	6:30pm SH Pack 36 Cub Scouts—Parish Center
WED	9:00am SM Food Pantry
	6:00pm SM Boy Scouts—Conference Room One
	6:30pm SM Cub Scouts—Cafeteria
	7:00pm SH Troop 34 Boys Scouts—Parish Center
FRI	10:00am SM Food Pantry
	7:00pm SM Haitian Choir Rehearsal
SAT	6:00pm SM BINGO

FIND US ON SOCIAL MEDIA



<https://www.facebook.com/LynnCathColl>

<https://twitter.com/LynnCathColl>



<https://plus.google.com/+LynnCatholicCollaborative>



COMING
SOON

SACRED HEART LOWER HALL

We are in the process of adding a hall in the lower level of Sacred Heart church! We have looked at the last version of the plans and have made changes to fit today's needs. Everyone is invited to take part in the planning process. If you want to know what the current plans are and/or have ideas that you would like to share please come to the information meeting and discussion on **Sunday, April 12th after the 10am Mass**. We will be meeting in the lower church. Please bring your questions and ideas.



***From the desk of
Pastoral Associate Fran Taylor***

How Jesus Reveals Himself

Where do you find Jesus? For the early church, it was in the community. Jesus was found in the teachings of the apostles but more so in the love that they had for one another. Acts of the Apostles tells us that they were of "one heart and mind" that they shared what they had so that no one went without. In the Gospel, Jesus tells Thomas and the other apostles, "Blessed are those who have not seen and have believed." We are those people who have not seen, but believe. We are those people whose love for one another should be so strong that others look at us and want what we have. We are the ones called to bear witness to the resurrection and the great favor God has bestowed on us. Last week our church celebrated the welcoming into the Catholic Church thousands of people across the globe. What drew them to Jesus? When we listen to the stories, as we have over the years, one thing stands out: they experienced Jesus within their community of family, friends, or co-workers. They saw the difference faith in Jesus made in the lives of others and they wanted it for themselves. Most of us grew up in the church and take it for granted, but we are the ones others look to and observe. Let us be the community of believers who are marked by our love and concern for others; a community where Jesus is visible to all in our words and our works.



**TRAVELING IMAGE OF
OUR LADY**

We have in our Collaborative, an image of Mary, Our Lady of Schoenstatt, that travels from home to home for a few days at a time. While in your home, you place the image in a place of honor that you can stop and pray at. Each day, ask Our Lady to intercede on your behalf and for all others you pray for. If you would like to have the image of Our Lady in your home, please contact Patricia Egbulwe at (978) 968-5050. It is a wonderful way to bring the faith to your home in a new way!



2015 CATHOLIC APPEAL

The 2015 Catholic Appeal campaign is off to a wonderful start!

Sacred Heart Parish **\$16,082** pledged, we are at **73%** of our goal of **\$21,919**.

St. Mary's Parish **\$22,819** pledged, we are at **79%** of our goal of **\$28,852**.

The early outpouring of support from so many helps sustain the important ministries that make our parishes a vibrant place of worship. If you have yet to give, please pick up a pledge form at the back of the church or visit www.bostoncatholicappeal.org. Thank you for your prayers and support.



**WINTER MAINTENANCE
COLLECTION APRIL 19**

This year, we have experienced an unprecedented amount of snow, all coming within a very short period of time. We are still digging out

and spring has already begun!

One of the casualties of this winter has been our weekly Offertory collection. The elements have prevented many from being able to attend Mass and make their generous Offertory donation. We understand your hesitance to venture out in this weather and we thank those who have made up their donations on the weeks they have been able to attend Mass. Another casualty of the winter has been the hit that our annual property maintenance budget has taken. We were definitely not anticipating such a winter when we prepared our annual budget at this time last year.

As a result of this unusual increase in property maintenance expenses, specifically snow plowing, salting and removal, our finances have taken an enormous hit. Therefore, we would like to ask for your assistance with our Winter Maintenance Collections. This will help us as we try to meet our financial obligations to snow plower's and roofers who have helped us clear the property by removing snow as well as the damaging ice dams from our buildings. They have been of great service to us this season.

Your generous donation to these two special parish collections, no matter how small, is very much appreciated.

Thank you.



EASTER FLOWERS

Thank you for the Easter Flower donations made by parishioners, families and friends of the Lynn Catholic Collaborative of Saint Mary & Sacred Heart in memory of their loved ones. Please keep them in your prayers. A Memorial Listing is available at the doors of both Churches.

Special thanks to the Decorating Committee for their Time & Talent at both parishes, our Worship spaces looked beautiful!



VISIT OUR NEW WEBSITE

St. Mary's and Sacred Heart have a new Collaborative website to better communicate all of our Masses, ministries, events and news! We encourage you to explore our website www.LynnCatholic.org.

BREAD & WINE MEMORIALS

We invite you to donate the bread and wine used at Masses for a one month period at St. Mary's the donation is \$50 or at Sacred Heart on a weekly basis for an offering of \$25.

You may make the offering in honor, or in memory of, a friend or loved one, and their names will be printed in the bulletin. Please call the Collaborative Office for more information.

SHS Family Fun Run and Spring Carnival has been rescheduled due to the bad weather expected. Mark your Calendar with the new date!



New Date! May 8, 2015

Starting at 6:00 p.m.
Runner's "Carb Up" Pasta Dinner and
On Your Mark - Get Set - Go - BBQ
 Free Pasta Dinner for Runners
Health & Wellness Booths
Spring Carnival
 Spring Carnival will offer a variety of fun activities for families such as bounce and obstacle blow ups, pony rides, face painting, DJ with dance contests for the children, coffee and much more.

New Date! May 9, 2015

9:00 a.m. - Registration & Bib Pick
10:00 a.m. - 5K Runner's Start
10:05 a.m. - 5K Fun Run & Walker's Start
 Following the Run Spring Carnival & BBQ
Health & Wellness Booths
Refreshments

Adult \$25 - Child (ages 4-13) \$10

<https://www.facebook.com/events/792140137541319/>

Online Registration: http://www.northshoretimingonline.com/reglivecb.aspx?eventyear_id=240



Please note in observance of Patriots Day there will not be a 12:05 Mass Monday April 20. Please join us at Sacred Heart for the 8:15am Mass.

The Collaborative Offices will be closed.



THE CLERGY FUNDS

Caring for the Health and Retirement Needs of our Priests

CLERGY COLLECTION

The Easter collection for the Clergy Health and Retirement Trust supported the health and well-being of our 628 active and senior diocesan priests. Thanks to your generosity, the Lynn Catholic Collaborative raised a total of \$11,213 in support of all of our priests who faithfully serve our Catholic family in the Archdiocese of Boston. Our parishes contribution will have a significant impact on the quality of life programs we are able to provide for our priests. If you were out of town this past weekend, or did not have the opportunity to participate, all are welcome to make a donation online at www.clergyfunds.org. On behalf of all our priests, thank you for your generous support of the Clergy Health and Retirement Trust.



LECTIO DIVINA

Lectio Divina leads to the understanding that Jesus Christ is the heart of the Scriptures. In Scripture, we seek Jesus, who is the way, the truth, and the life. We discover that every word of the Bible bears witness to the living Word who is Christ. And through Lectio Divina, we enter into a heartfelt conversation with him. Starting this week, we will be meeting to learn about and pray 'Lectio Divina'. Everyone is welcome to join us from 6:30pm to 7:30pm on the **first and third Mondays** in the rooms next to the St. Mary's Chapel. Our next gathering is **Monday, April 20**. Questions? Please talk with Fr. Brian.

PASCHAL CANDLE MEMORIALS



This year's Pascal Candle at **Sacred Heart** has been donated in loving memory of **CATHERINE BEDARD** By her loving family

This year's Pascal Candle at **St. Mary's** has been donated in loving memory of **HELEN FILLMORE** By her loving family

May they rest in peace as we enjoy our Pascal Candle until Easter of 2015.

The new candle will be blessed and lit for the first time on Holy Saturday evening, as we once again remind ourselves that Christ is the Light of the World.



KIRBY HAYES SCHOLARSHIP:

Applications for the Kirby Hayes Scholarships are now available at the Collaborative Office. The deadline for applications is June 1, 2015. Each year college scholarship awards are made through the Kirby Hayes Scholarship Fund that is administered by St. Mary's Parish for current high school Seniors that are St. Mary's active parishioners entering college in the fall.

COLLABORATIVE HEALING SERVICE

Our collaborative held our first healing service at Sacred Heart Church in February, which many attended. It will continue monthly on the last Wednesday of every month, starting with Adoration at 6:00pm, the Holy Mass at 7:00pm followed by praise, worship & healing.

Anyone who would like to volunteer their musical talents, either by playing a musical instrument or singing, please contact Fr. Tamiru at 781-598-4907 or TAtraga@LynnCatholic.org, or contact Kathleen Savage at 781-592-2159 or kathy.sav@verizon.net.



FOOD PANTRY FOOD DRIVE

Please remember our Food Pantry has Food Drives each weekend. We are in need of **Ensure** and **diapers—any size**. Please leave your donations at the back of either St. Mary's Church/Chapel or Sacred Heart Church. **We thank you**

for all that you do!

COLUMBIA INSURANCE PROGRAM

Special thanks to all those parishioners who participate in the Columbia Insurance Program, Lynn, MA through Sacred Heart Church. If you are getting ready to insure your automobile, why not check with Columbia Insurance to see how their rates compare with their competitors. Their phone number is (781) 598-5000. Please let them know you are from Sacred Heart Church in Lynn, MA.

OPEN YOUR HEART

EduBoston international students live with host families for an academic year while attending high school. Your family will not only gain a new family member, but you will also learn about a different culture, its values and traditions, language, food, and more. Help support your community, school, and international youth!

As a Host Family, your generous hospitality will not go unnoticed. Host Families will be compensated for their support with a **monthly stipend**, designed to cover all of the associated costs of hosting an international student. Visit the EduBoston website at www.eduboston.com for more information and to fill out a **Host Family Application**. You may also contact **Jennifer McKinstry**, the EduBoston Program Manager, at jennifer@eduboston.com or by phone at **508-736-4978**



WORLD MEETING OF FAMILIES 2015

Members of the Archdiocese of Boston seeking to learn more about how to serve families within their communities and any individuals or families wanting to come together with tens of thousands of others from across the globe in faithful celebration of the family. The World Meeting of Families takes place from Tues. Sept. 22, 2015 through Friday Sept. 27, 2015. The Congress of the World Meeting of Families will be held at the Pennsylvania Convention Center in Center City, Philadelphia For full details on the history of the event, visit the official World Meeting of Families website: www.worldmeeting2015.org

TROOP 34 FUNDRAISER

Troop 34 Sacred Heart will be holding a Can/Bottle Drive Fundraiser on Saturday May 2nd.

Anyone willing to donate redeemable cans and bottles are welcome to drop them off at Sacred Heart Church Parish Center between 8am and 11am on May 2nd. For those willing to donate but unable to do so during these hours may contact James Troisi, Scoutmaster 781-405-9427 to make other arrangements.

This fundraiser is to provide resources for a quality program and future Scouting events. Thank you for your support, Troop 34



Prayer Shawl Ministry

The next meeting of the Prayer Shawl Ministry will be held on TUESDAY, APRIL 14 from 2 to 4pm at the Collaborative Office. If you enjoy knitting or crocheting and would love to create, we would love you to come and join us. We not only share a hand made gift, but also say a prayer while it is being made that the person who receives it will be touched by and blessed by Jesus. as we believe in the power of prayer and trust that he knows what is best. If you would like to learn or begin again we have yarn, patterns and lots of wonderful crafters to meet. Questions? please call Bernie at 781-599-2487. All are welcome!

Join us Sunday April 19th for a performance by the Koinonia Academy Concert Choir At the 11:30am Mass at St. Mary's and at 1:30pm at Sacred Heart. All are Welcome!





WATCH THIS VIDEO
and see how your bulletin is made.

Scan this qr code with your smart phone and app.

617-779-3770



To make a gift in honor of our priests, visit www.clergyfunds.org



Clergy Health and Retirement Trust
Caring for the Well-Being of our Boston Priests



1215 Main Street, Unit 122
Tewksbury, MA 01876
(978) 851-9103

Rosaries from Flowers
"Handmade from the Flowers of your Loved One"
www.rosariesfromflowers.com

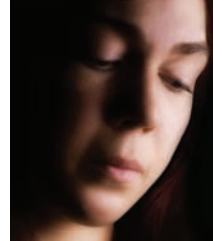
Advertising Sponsors
make this bulletin possible

For Information Call



Jim DeSantis
Authorized Sales Representative
PilotBulletins
617-407-0940
jdesantis@PilotBulletins.net

Rachel mourns her children; She refuses to be consoled, because her children are no more. Thus says the Lord: "Cease from your cries of mourning. Wipe the tears from your eyes... There is hope for your future."
Jeremiah 31:15-17



Project Rachel is a confidential Catholic outreach ministry offering hope and healing to women and men hurting from past abortions. **Trust in the tender embrace of God's merciful love.**

www.ProjectRachelBoston.com
help@ProjectRachelBoston.com



GetCatholicTV.com

Plan ahead for Mother's Day!

Stapleton Floral is generously donating 20% of the proceeds of their beautiful Mother's Day Azaleas to support the programs of **Catholic Charities** Archdiocese of Boston



635 E. Broadway, Boston, MA
200 Seaport Blvd. - World Trade Center - Boston, MA

Visit stapletonfloral.com to order or call 617.269.7271

ECHØES A FORUM OF CATHOLIC THOUGHT

Dialogue shaped by revelation and reason

COME DISCOVER
ECHOES.THEBOSTONPILOT.COM

THE **NEW** OPINION SECTION OF THEBOSTONPILOT.COM



Subscribe to **The Pilot** on Amazon.com
\$1.49 a month



Bring the Good News WITH YOU. EVERYWHERE.

Save 30% to 50% On Most Printing Costs!

If you bring your printing to a chain store or other printer, money is leaving with those print jobs. We can help save you money.

- | | |
|------------------|----------------------|
| Booklets | Notepads |
| Bookmarks | Plastic Cards |
| Business Cards | Postcards |
| Calendars | Posters |
| Door Hangers | Presentation Folders |
| Flyers/Brochures | Stickers |
| Greeting Cards | Table Tent Cards |
| Magnets | & much more |
| Newsletters | |

Proud Printers of This Bulletin

617-779-3777

printing@PilotPrinting.net
www.PilotPrinting.net



"I have protection for my family, and we're members of their community."

Low-cost life insurance from the Catholic Association of Foresters

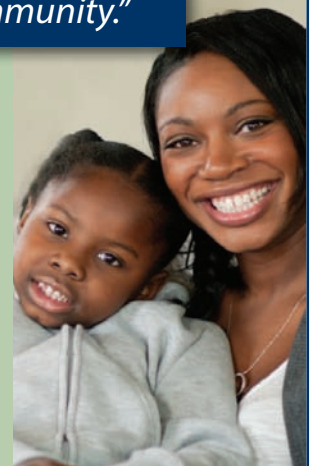
Protecting families. Nurturing community. These ideas have sustained our fraternal benefit society since 1879. And they're just as important as ever today. That's why we offer you:

- A variety of final expense life-insurance policies
- A range of grants and scholarships for education
- A community rooted in faith



To find out more call toll free 1-800-282-2263 or go to www.catholicforesters.org

Standing strong to protect you and your family.
220 Forbes Road, Suite 404, Braintree, MA 02184



SPANO & DAWICKI

The Estate, Elder Law,
Retirement And
Special Needs Firm



Protecting Your Home, Your Assets,
Your Quality Of Life And Your Family

HELP@SpanoDawicki.com

Saugus 781-231-7800 • Woburn 781-933-0053

Cambridge 617-354-0144 • Beverly 978-922-2100 • Boston 617-720-0002

VA ACCREDITED • NATIONAL ACADEMY OF ELDER LAW ATTORNEYS



Joseph S. O'Connor, PT, SCS
Owner & Clinic Director
One Market Street, 3rd FL., Lynn
781-592-0540 - www.APTSR.com



i'm lovin' it
Stephen Rima, Owner/Operator
"On the Lynnway"

John's Oil Co.
24 Hour Burner Service



15 Avon Street, Lynn
Tel: (781) 592-9505
www.johnsoil.com

Oil and Gas Heating Systems
Repairs and Installations

"God is Love"
1 John 4:8

CALLAHAN LAW GROUP, LLC
617-657-3489

Bankruptcy Employment Law
Personal Injury DUI Defense

WWW.CALLAHANLAWGROUP.COM
DCALLAHAN@CALLAHANLAWGROUP.COM



The Catholic Cemetery Association

Our ministry includes assisting families before a death occurs. Call today for your free pre-planning kit including: our free booklet, money saving certificate, information on payment plans and specific information on our Malden, Salem and Lynn area Catholic Cemeteries.

Shouldn't your family be protected?

Call Today • 339-226-1271

HARRINGTON TROPHY
TROPHIES - PLAQUES
SCREEN PRINTING - EMBROIDERY
www.HarringtonTrophy.com
557 Chestnut St. Lynn, MA
781-599-3700

The Original
Thomas Burke & Sons
ROOFING • GUTTERS
FREE ESTIMATES www.BurkeRoofs.com FULLY INSURED
781-246-5622
A FAMILY BUSINESS SINCE 1941

SPACE
AVAILABLE

Nadworny

Richard C. Nadworny
Richard C. Nadworny, Jr.

FUNERAL HOME & CREMATION SERVICE

798 Western Avenue, Lynn, MA 01905 | Phone 781-593-5520

FAMILY OWNED & OPERATED SINCE 1958

DEDICATED & DIGNIFIED

Private Parking Area • Handicap Accessible
www.nadwornyfuneralhome.com

Skilled Nursing
Short-Term Rehabilitation
Sub-Acute Care | Respite Care



Distinctly Different
781-592-9667
111 Birch St.
Lynn, MA 01902
LCCCA.com



John Olson • Christine Pierce 31 Central Square • Lynn
Columbia Insurance Agency, Inc. 781-598-5000
www.ColumbianInsuranceAgency.net

Call for details of our special offer for Sacred Heart parishioners.

TRAHANT ROOFING

4th Generation Serving the North Shore

• Residential • Commercial

• Shingles • Rubber • Gutters

(781) 599-1211

FREE Estimates • Licensed & Insured
MA Lic. # 116746 • HIC. # 141778

DUNKIN' DONUTS Wednesdays
10AM - 12noon
42 Market St. Lynn

Employment Opportunities
On the spot interviews.

Selling Your Home?
Want an Honest Opinion of Value?



FREE SERVICE

Call John Connor

CONNOR REAL ESTATE

781-581-5940

WEST LYNN

SAUGUS (781) 233-7060

Pondview Lodge Adult Day Health Center

PROGRAMS DESIGNED TO ACCOMMODATE THE SPECIAL NEEDS OF INDIVIDUALS WITH MEMORY DISORDERS AS WELL AS MEET THE NEEDS OF THOSE WHO WOULD BENEFIT FROM A TRADITIONAL DAY PROGRAM:

- Personal Care Assistance
- Monthly Nursing Assessments
- Clinical Social Work Support
- Medication Management
- Hot, nutritious meals
- Specialized failure-free therapeutic activities.
- The ability to obtain needed quality healthcare.
- Opportunities to socialize, develop friendships & receive peer support.
- Respite services for families & caregivers.
- Transportation Services
- OPEN MONDAY THROUGH SATURDAY 8AM-4PM



FIRST DAY FREE!

Call us Today: 781.598.4570

112 Kernwood Drive, Lynn, MA 01904

Desiree Michaud, Admission Coordinator

dmichaud@elderservices.com

Family Owned & Operated



The Porthole
Restaurant & Pub

781-595-7733

98 Lynnway, Lynn MA

www.PortholeRestaurant.com

POLLO ROYAL RESTAURANT



115 Commercial St
Lynn, MA 01905
781.780.9953

15% OFF*
WITH THIS COUPON

529 Broadway
Revere, MA 02151
781.284.6039

*Not valid with any other coupons or discounts • Not valid on deliveries

Subscribe to The Pilot

Get the Catholic Perspective and be fully informed.

Subscribe: 617-779-3792